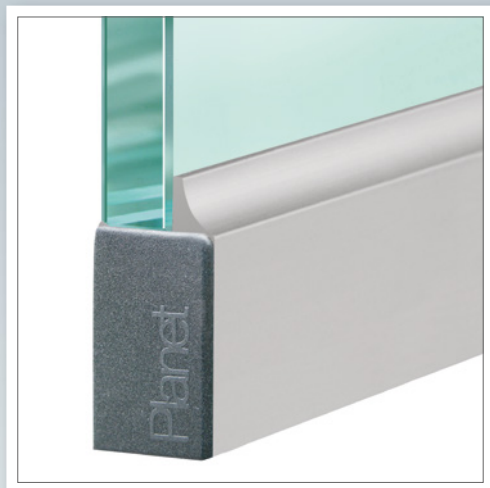
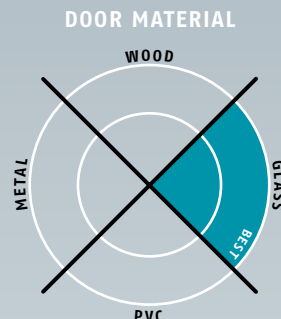


Planet KG-D8 | D10 → 16,5 x 28 / 35 mm | ↓ 18 mm | ≤ 48 dB



Main features

- Seal height up to ↓ 18 mm
- Acoustic insulation up to ≤ 48 dB in case of an optimal sealing
- For one and double leaf folding all-glass doors, with a glass thickness of 8 to 10 mm
- Planet KG-D8 | D10 with UV-pasted from the bottom glass edge (handed over by customer)
- Appropriate for functional doors
- Planet drop-down seal cemented in D8 / D10 protection profile
- Unilateral and soundless release, silent seal
- Due to parallel drop-down no trailing on the floor
- Automatic compensation at inclined floors
- High-grade silicone lip, simple lift height adjustment
- Can be shortened up to the next shorter length on stock
- 7 years warranty

Versions / options

- Planet KG-D8 | D10 → RD ≤ 48 dB, smoke-shielding
- Planet KG-D8 | D10 → FH+RD ≤ 48 dB, fire-retardant + smoke-shielding
- Option **bevel lip** ≤ 44 dB, up to ↓ 22 mm, for uneven floors
- Special versions on request

Surfaces

- Protection profile **silver anodised EV1**
- Protection profile **stainless steel satin anodised**

Door types with Planet KG-D8 | D10

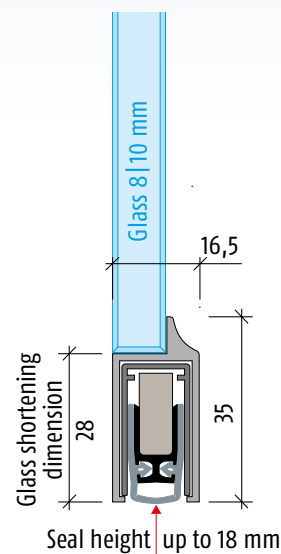


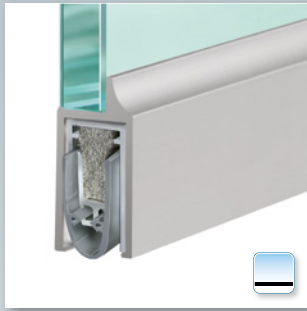
More functions



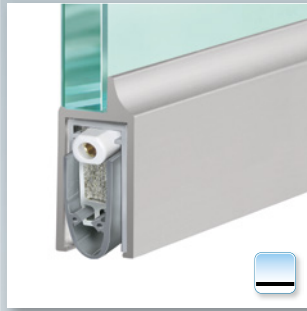
Technical specifications

Profile material	aluminum, → 16,5 x 28 mm, silver anodised EV1 or stainless steel satin anodised
Seal profile	high-grade silicone or high-grade self-extinguishing silicone
Seal height	up to ↓ 18 mm
Sound absorption value	up to ≤ 48 dB at 7 mm space to the floor; up to ≤ 46 dB at 14 mm space to the floor
Lift height adjustment	on the release knob with an Allen key 3 mm
Lengths in stock	459, 584, 709, 834, 959, 1084, 1209, 1334, 1459 mm
Special lengths	on request up to 6000 mm, sliding doors up to 1600 mm
Release	unilaterally on hinge side
Can be shortened	up to the maximum of 125 mm
Fastening	to be glued
Frame protector plate	stainless, hammer fixed, 20 x 20 mm
Test approvals	on request

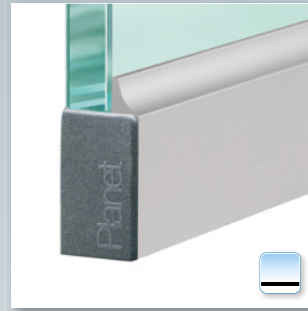




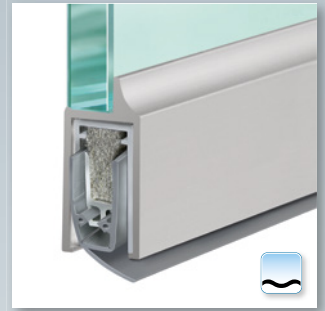
Planet KG-D8 | D10, UV-pasted from the bottom on glass door



Planet KG-D8 | D10, UV-pasted from the bottom on glass door, release side



Planet KG-D8 | D10, with cover plate



Option: Planet KG-D8 | D10, bevel lip for **uneven floors**



Accessories: Planet frame protector plate, type 1 (stainless), 20 x 20 mm



Set of Planet cover plates Planet KG

Order specifications

Planet KG-D8 D10 → RD ⚡ 48 dB → silver anodised EV1 incl. set of cover plates and frame protector plate, type 1	Prod. code 38xxx-D8 D10*
Planet KG-D8 D10 → FH+RD ⚡ 48 dB → silver anodised EV1 incl. set of cover plates and frame protector plate, type 1	Prod. code 39xxx-D8 D10*
Planet KG-D8 D10 → RD ⚡ 48 dB → stainless steel satin anodised incl. set of cover plates and frame protector plate, type 1	Prod. code 38xxx-D8X D10X*
Planet KG-D8 D10 → FH+RD ⚡ 48 dB → stainless steel satin anodised incl. set of cover plates and frame protector plate, type 1	Prod. code 39xxx-D8X D10X*

* xxx = refer to price list for profile length

Accessories | Options

Planet frame protector plate type 1 (stainless); possible type 2/3/4/5 → refer to chapter Accessories Options	Prod. code 900014
Cut the Planet to fix dimension	Prod. code 900225
Set of Planet cover plates Planet KG	Prod. code 900252
Sliding door	Prod. code 900908
Bevel lip (⚡ 44 dB, up to ↓ 22 mm) DIN L or DIN R	refer to price list, options / supplements

Advertising text



Planet KG-D8 | D10 → RD (smoke-shielding) ⚡ 48 dB

Automatic door drop-down seal **Planet KG-D8 | D10 → RD ⚡ 48 dB**, unilateral release with parallel drop-down and automatic compensation at inclined floor, protection profile silver anodised EV1 or stainless steel satin anodised, UV-pasted from the bottom on glass door, seal height up to ↓ 18 mm. Lip from silicone. Protection profile and profile made from aluminum → 16,5 x 35 mm, incl. cover plate on lock side for folding doors.

Advertising text



Planet KG-D8 | D10 → FH+RD (fire-retardant + smoke-shielding) ⚡ 48 dB

Automatic door drop-down seal **Planet KG-D8 | D10 → RD+FH ⚡ 48 dB**, appropriate for fire-retardant and smoke-shielding doors, sound absorption value SK 1-3, unilateral release with parallel drop-down and automatic compensation at inclined floor, protection profile silver anodised EV1 or stainless steel satin anodised, UV-pasted from the bottom on glass door, seal height up to ↓ 18 mm. Lip from silicone. Protection profile and profile made from aluminum → 16,5 x 35 mm, incl. cover plate on lock side for folding doors.